



Southampton Solent University

East Park Terrace
Southampton
SO14 0YN

Tel: +44 (0)23 8201 5066

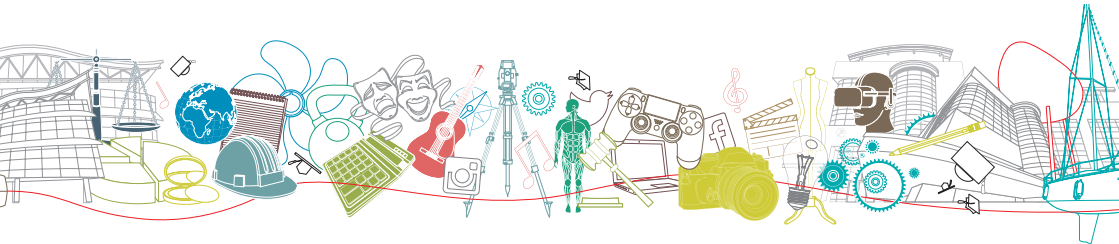
Email: admissions@solent.ac.uk

solent.ac.uk

 solentuniversity
 @solentofficial

2017

UCAS tariff table



AS/A Level qualifications

AS Levels	A Level	Tariff points for 2017
	A*	56
	A	48
	B	40
	C	32
	D	24
A		20
B	E	16
C		12
D		10
E		6

BTEC qualifications

BTEC Extended Diploma	BTEC Diploma	BTEC 90 Credit Diploma	BTEC Subsidiary Diploma	BTEC Certificate*	Tariff points for 2017
D*D*D*					168
D*D*D					160
D*DD					152
DDD					144
DDM					128
DMM	D*D*				112
	D*D				104
MMM	DD				96
		D*D*			84
MMP	DM				80
		D*D			78
		DD			72
MPP	MM				64
		DM			60
			D*		56
PPP	MP	MM	D		48
		MP			36
	PP		M		32
				D*	28
		PP		D	24
			P	M	16
				P	8

OCR Cambridge Technicals

OCR Cambridge Technical Extended Diploma	OCR Cambridge Technical Diploma	OCR Cambridge Technical Subsidiary Diploma	OCR Cambridge Technical Introductory Diploma	OCR Cambridge Technical Certificate	Tariff points for 2017
D*D*D*					168
D*D*D					160
D*DD					152
DDD					144
DDM					128
DMM	D*D*				112
	D*D				104
MMM	DD				96
		D*D*			84
MMP	DM				80
		D*D			78
		DD			72
MPP	MM				64
		DM			60
			D*		56
PPP	MP	MM	D		48
		MP			36
	PP		M		32
				D*	28
		PP		D	24
			P	M	16
				P	8

Other qualifications including OCR and UAL

Welsh Baccalaureate Advanced Skills Challenge Certificate	Extended Project	Diploma in Foundation Studies (Art and Design, and Art, Design and Media)	OCR National Extended Diploma	OCR National Diploma	OCR National Certificate	UAL Extended Diploma in Art and Design	UAL Extended Diploma in Performing Arts	Tariff points for 2017
						D	D	168
			D1					144
			D2/M1					128
						M	M	120
		D	M2					112
		M	M3	D				96
		P	P1	M1				80
						P	P	72
			P2	M2/P1				64
A*								56
A			P3	P2	D			48
B								40
C				P3	M			32
	A*							28
D	A							24
	B							20
E	C				P			16
	D							12
	E							8