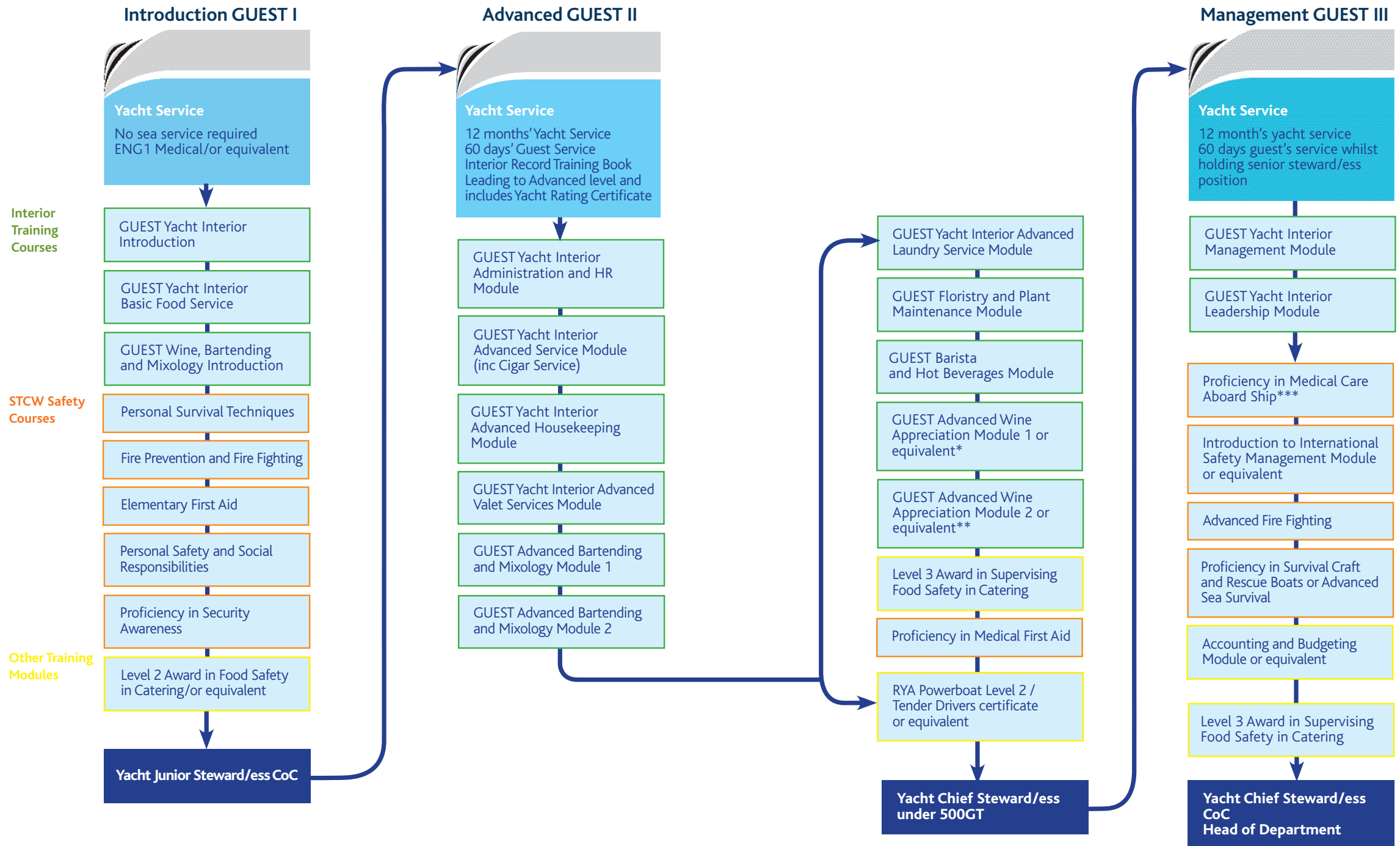


INTERIOR AND HOSPITALITY (YACHTS) – PROGRESSION CHART



* 1-day course other recognised courses include: WSET Level 2, International Wine Guild Level 1, EIS Level 1. **3-day course other recognised courses include: WSET Level 2, International Wine guide level 2, EIS Level 2. *** The prerequisite for Proficiency in Medical Care is Proficiency in Medical First Aid. Please check www.warsashsuperyachtacademy.com for the latest version. © Warsash Superyacht Academy, 2017